

MOTOR

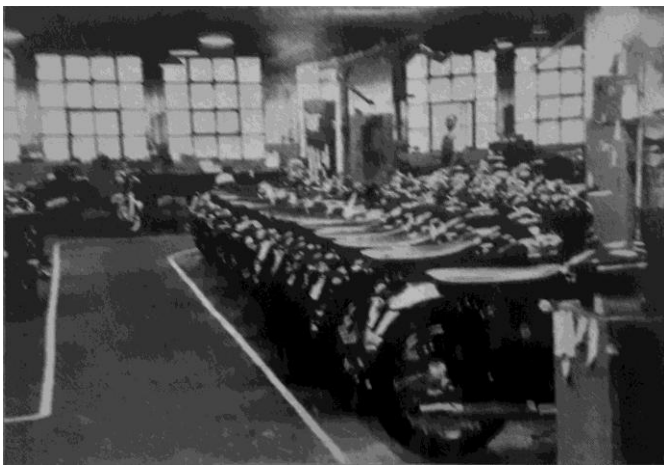
49e JAARGANG No. 45
9 NOVEMBER 1962

HET NEDERLANDSE MOTORWEEKBLAD
TEVENS OFFICIEEL ORGAAN DER K.N.M.V.

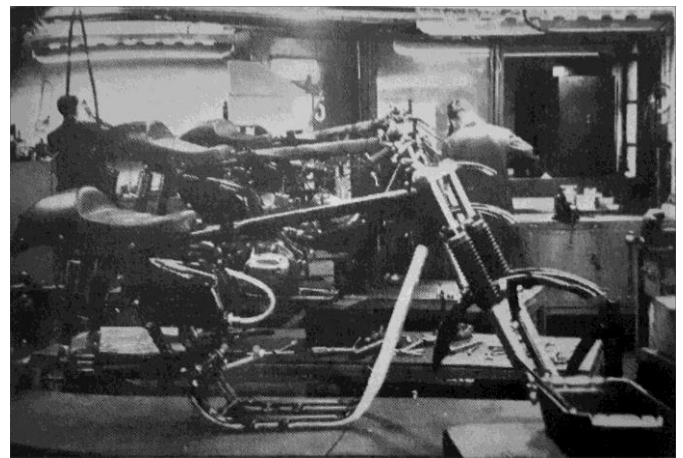
This is How Your AJS & Matchless is Made

The following collection of AMC factory pictures was submitted by our long-time correspondent Jos Vanderwoude, who unearthed an article that appeared in the Dutch Motor magazine, published in 1962.

As the title suggests, the article described some of the various motorcycle manufacturing processes employed at the Plumstead Road factory. *(Unfortunately, as it was written before the adoption in the Netherlands of the more universally recognised English language, all we can show here are the pictures, with our captions added for clarity).*



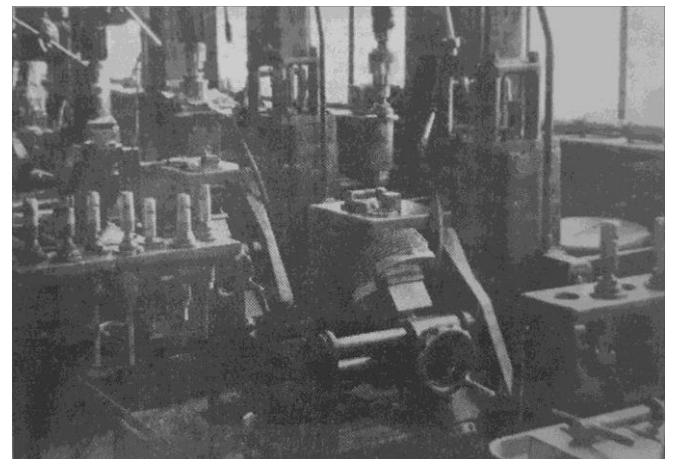
Finished bikes in Assembly Shop



Racing bike assembly



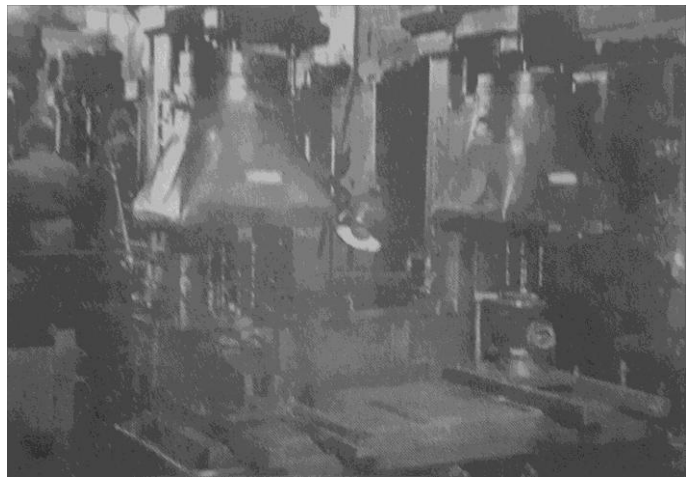
One of the Drilling Departments



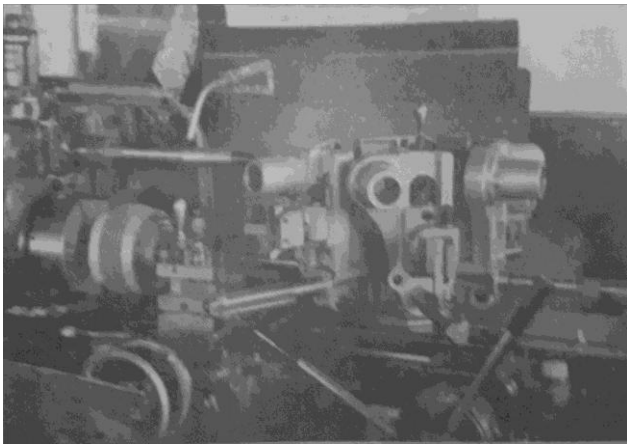
Quick-change tools in rack



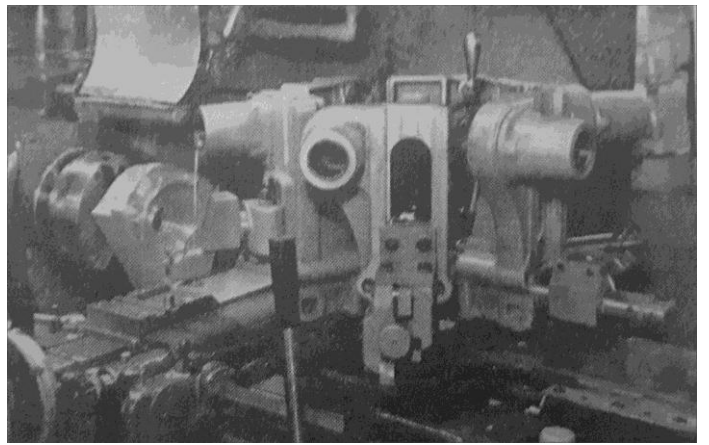
Tapping operations



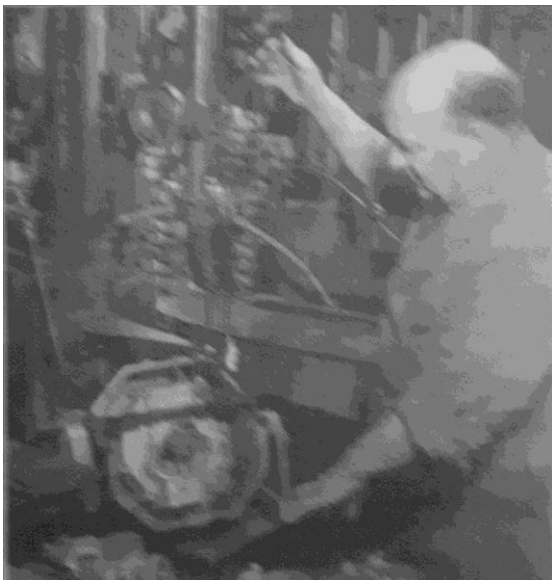
Multi-spindle drilling machines



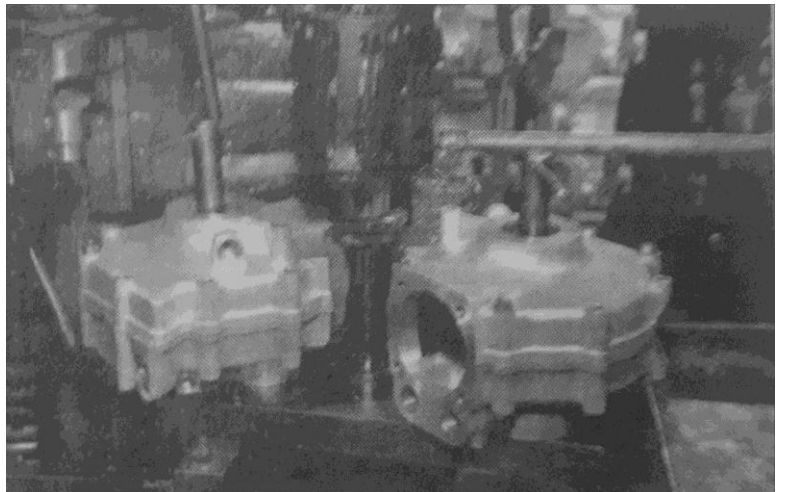
Capstan lathe



Close-up of capstan lathe tool turret



Crankcase drilling operation



Paired crankcase alignment (main bearing boring)

Note: A few of the above pictures also feature in the Alfred Herbert article 'Machine tool re-equipment at AMC' (accessible from the Links page)